

Petone Beach

Coastal Restoration Conference

March 2025

Graeme Lyon

The Friends of Petone Beach







Patrick St 2009



1930s

From Warwick Johnston's
History of Petone Beach



Wharf 25 July 2011

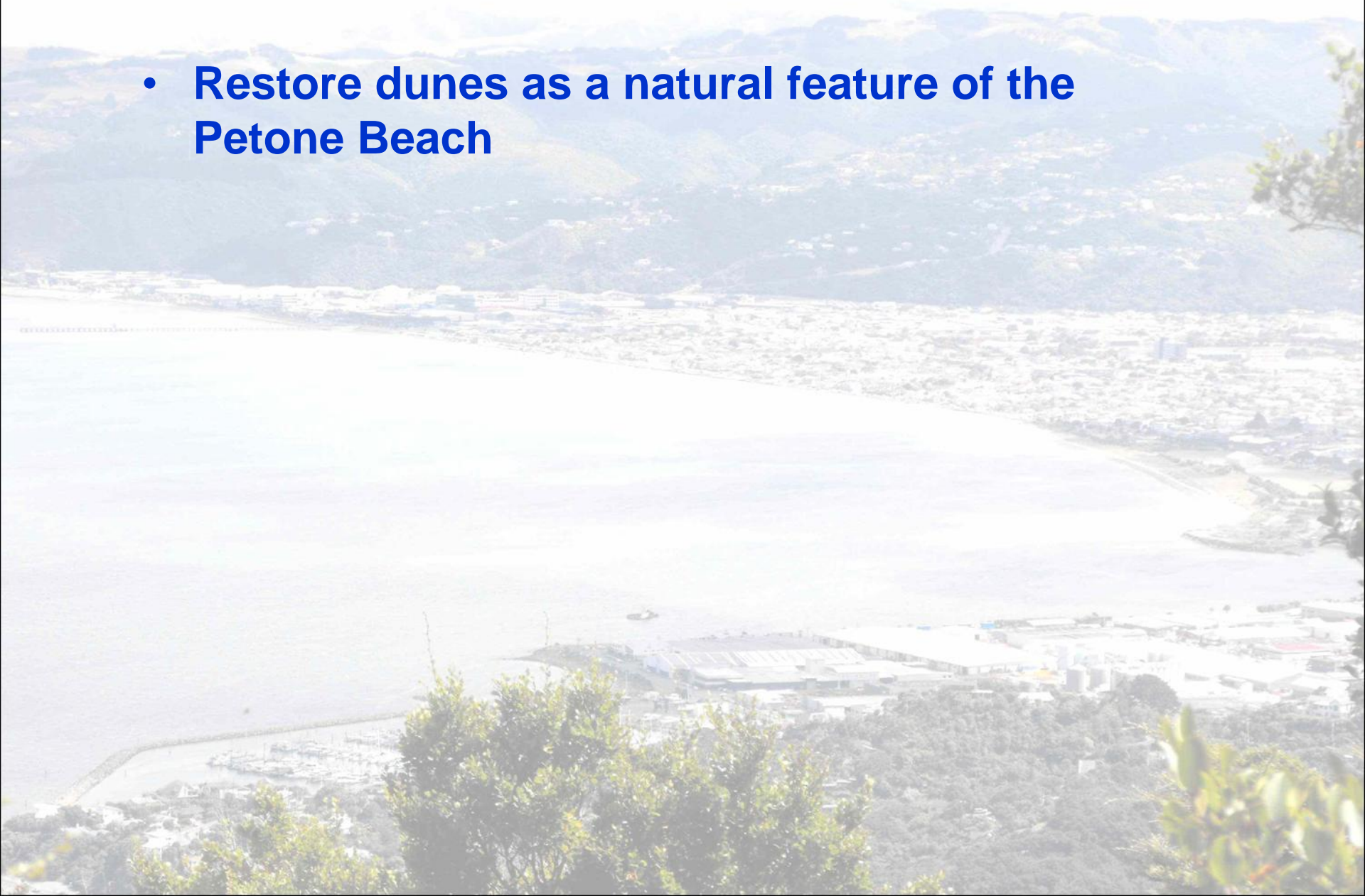


Effect of storm surges



Museum Oct 2007

- The Petone Dune Restoration Project aims to:
- **Restore dunes as a natural feature of the Petone Beach**



- The Petone Dune Restoration Project aims to:

- **Restore dunes as a natural feature of the Petone Beach**

For:

- **Mitigation against potential rising sea level,**
- **Minimising storm surge damage,**



- The Petone Dune Restoration Project aims to:

- **Restore dunes as a natural feature of the Petone Beach**

For:

- **Mitigation against potential rising sea level,**
- **Minimising storm surge damage,**
- **Mitigation against the next tsunami,**
- **Restoration of native biodiversity,**



- The Petone Dune Restoration Project aims to:

- **Restore dunes as a natural feature of the Petone Beach**

For:

- **Mitigation against potential rising sea level,**
- **Minimising storm surge damage,**
- **Mitigation against the next tsunami,**
- **Restoration of native biodiversity,**
- **Reduction in wind-blown sand to streets and properties adjacent to the beach,**

By:

- **Planting native plants, mainly pingao and spinifex and by removing weeds and marram.**

- What has this project done:



Early planting



BBQ area, Richmond St
Pingao planted 2004

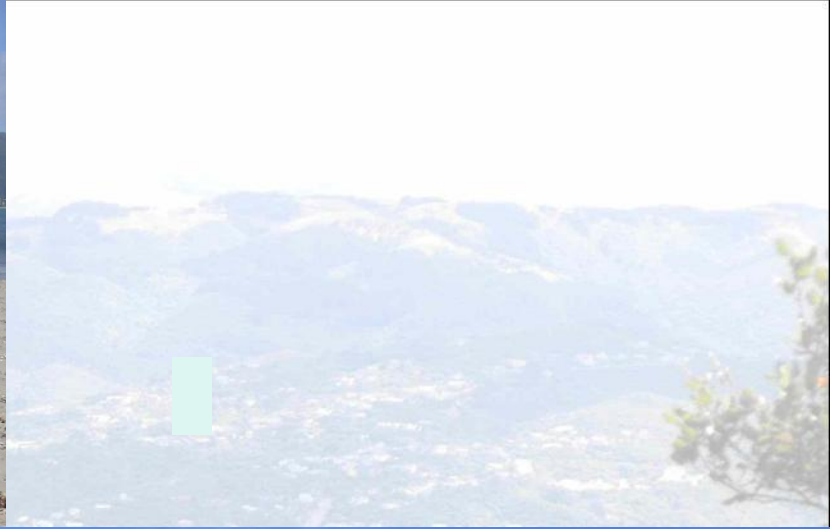
November 2006



BBQ area, November 2006



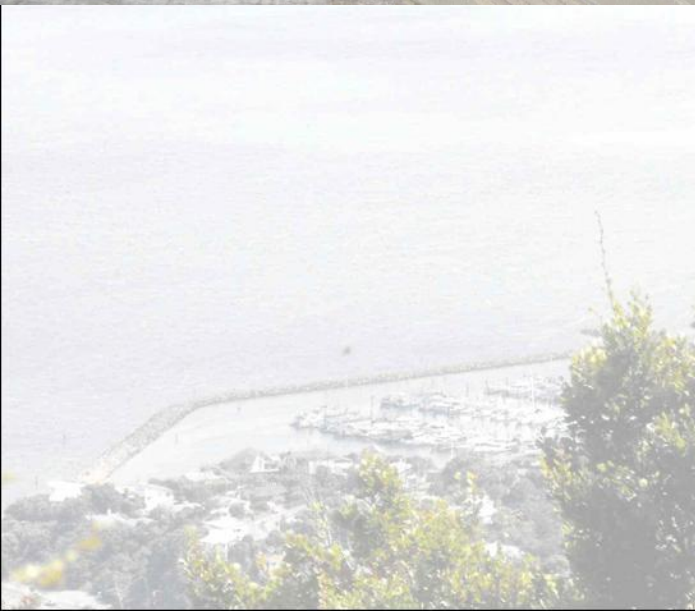
February 2013

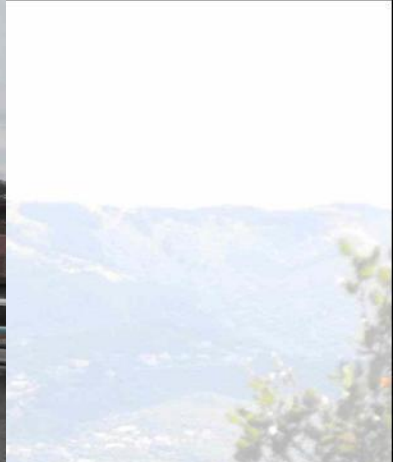


BBQ area, November 2006



November 2023





Patrick St
2009

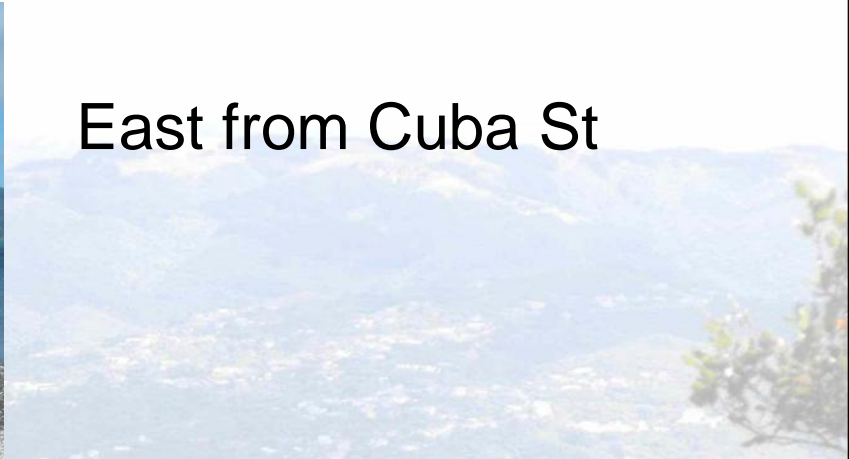


2018





East from Cuba St

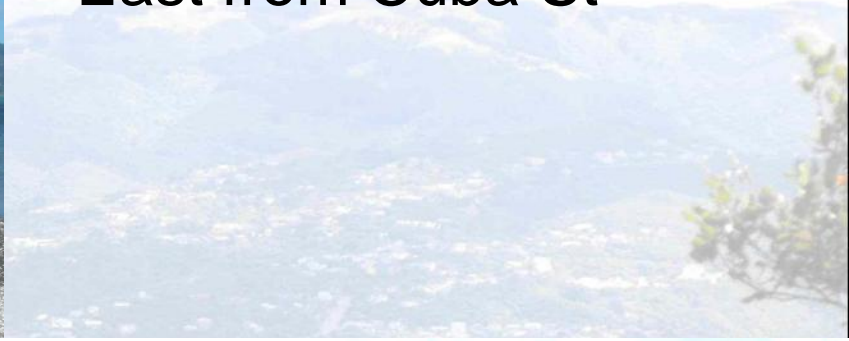


October 2009 -
March 2010





East from Cuba St



October 2009 -

March 2025



Google Earth

2009

Petone Settlers Museum
History exhibits &
interactive programs



2022

Petone Settlers M
History exhibits



2013

Petone Settlers
History
interactiv



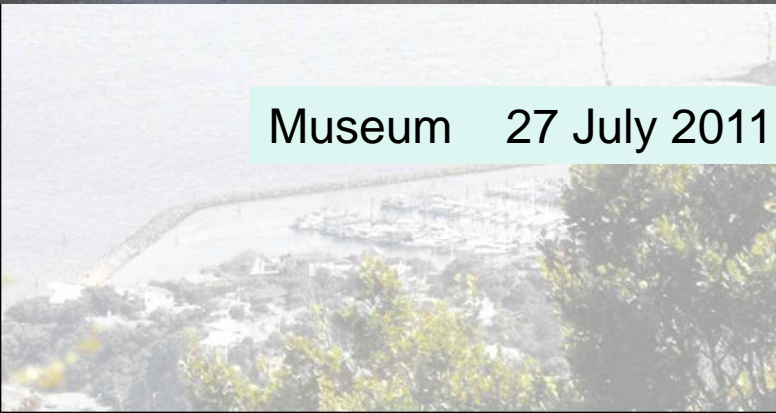
2022

Petone Settlers M
History exhibits

Effect of storm surges



Museum Oct 2007



Museum 27 July 2011



Effect of storm surges



Museum Oct 2007



November 2023



2025



An aerial photograph of a coastal town and bay. The town is built on a hillside overlooking the water. In the background, there are rolling hills and mountains under a clear sky. The water is a light blue color, and there are some buildings and structures visible in the town.

Challenges for the future:

Maintaining the dunes relatively free of weeds.

Controlling potential over-development :e.g. Trails on the sand.

Managing stormwater drains to the sea.

March
2025



